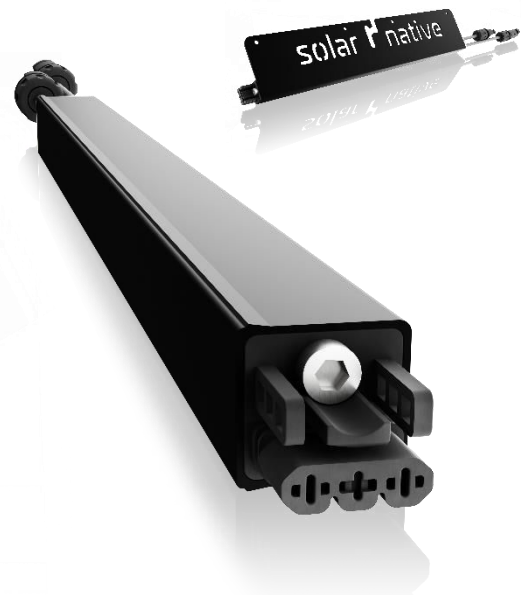


# PowerStick

## 350



### Micro-Inverter for PV Modules

Based on our unique high-frequency technology, the PowerStick 350 is the smallest and fastest inverter in the world. It is available as standalone version with mounting plate and as integrated version for customized applications.

## Key Features



**Maximized energy yield**  
Module-level MPP tracking  
Superior low-light performance  
Enables maximum use of rooftop space



**Highest reliability**  
25 years limited warranty  
Reduced component count leads to lower failure rates



**Easy installation**  
Plug & Play  
No data cables  
Automatic device detection  
Automatic mapping  
Remote over-the-air commissioning



**Inherent safety**  
No high DC voltages during installation and operation (no risk of fire)  
Self-limiting string design  
Integrated NS protection

# Models

**PS-350-10:** Standalone version with mounting plate.

**PSX-350-10:** Integrated version without mounting plate for customized applications; application-based approval by Solarnative required.

## Technical Data

Input (DC)	PS-350-10	PSX-350-10
Recommended module power	Up to 440 Wp	
DC connector	Stäubli MC4	
MPP voltage range	25 V – 60 V	
Start input voltage	15 V	
Max. voltage	60 V	
Max. Current	15 A	

Output (AC)	PS-350-10	PSX-350-10
Rated power (@ 230 V, 50Hz)	350 W	
Rated apparent power	350 VA	
Nominal voltage / Grid frequency	230 V / 50 Hz	
Max. current	1.5 A	
Max. power factor	> 0.99	
Adjustable power factor	0.9 overexcited to 0.9 underexcited	
Over-voltage class	II	
Feed-in phases / Connection phases	1 / 1	
NS-protection	Integrated	

Efficiency	PS-350-10	PSX-350-10
Max. efficiency / European efficiency	> 96.5 % / > 96 %	

General Data	PS-350-10	PSX-350-10
Ambient temperature range	-40 °C to +65 °C	
Dimensions without DC connectors (length x width x height)	440 mm x 75 mm x 24 mm	410 mm x 23 mm x 24 mm
Weight	470 g	370 g
Cooling	Natural convection	
Degree of protection	IP67	
Protection class	I	
Noise emission	< 40 dB	

Compliance	PS-350-10	PSX-350-10
Certifications (pending)	C10/11:2021 Edition 2.1, CE, CEI 0-21:2022, DIN EN/IEC 62109-1/2, EN50549-10:2022, G99/NI:2019, NTS:2020, TOR Erzeuger Typ A:2019, VDE-AR-N 4105:2018, DIN VDE 0126-1-1/A1 + VFR 2019,	

# PV System Architecture

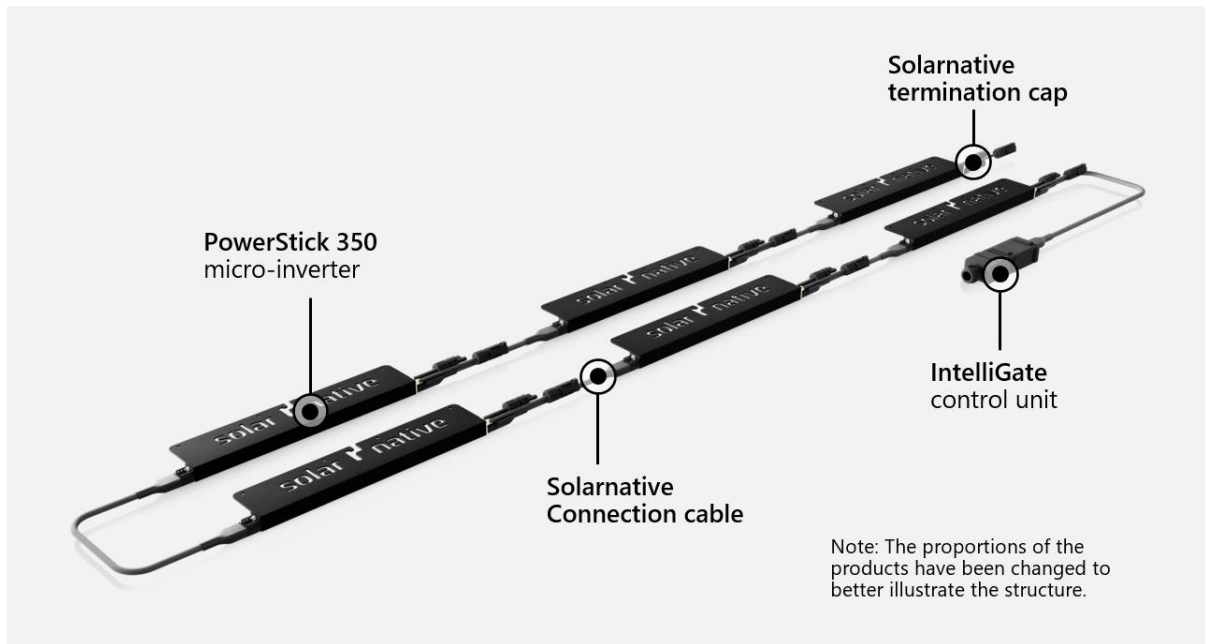


Illustration: Example setup with six PV modules

System	PS-350-10	PSX-350-10
Maximum current per string	20 A	
Number of inverters per string	40. Self-regulated system. No minimum number of inverters.	
Recommended maximum number of inverters per string	South orientation: up to 13 modules East-West orientation: up to 20 modules facing east + up to 20 modules facing west	
System components	PowerStick, Connection Cable, Termination Cap, IntelliGate (optional: PowerMeter)	
Connectivity	IntelliGate to PowerStick: Power-line communication IntelliGate to Cloud Server: LTE (4G) IntelliGate to other system components: LoRa ready	